

# ADJUSTING TO YOUR NEEDS.



**PHSChiropractic**  
by Pivotal Health Solutions

ErgoStyle FX Table from Hailey Descoteaux, DC, CACCP, owner of Generations Chiropractic. Photo by Charlie Lynn Miller | River City Birth Photography

# 2022-2023

**CHIROPRACTIC EQUIPMENT CATALOG**

[phschiropractic.com](https://phschiropractic.com) | 800.743.7738

# TABLE OF CONTENTS

ErgoStyle Family .....	4
TradeMark Tables .....	10
Treatment Tables .....	12
Decompression Table .....	16
Apollo Laser .....	18
Clinical Accessories .....	19

phschiopractic.com  
800.743.7738

CREATE YOUR  
PIVOTAL  
PRACTICE

## What is a Pivotal Practice?

A Pivotal Practice incorporates a multi-disciplinary approach to related areas of health care such as chiropractic, massage and physical therapy using a variety of PHS products and equipment. A diverse course of treatment options opens your practice to greater opportunities and allows you to successfully treat a wider selection of conditions and patients adding value to your practice.



## WHY CHOOSE PHS CHIROPRACTIC?

Since our launch in 2009, PHS Chiropractic, a brand of Pivotal Health Solutions, has become an industry leader in beautifully designed, configurable chiropractic tables, and accessories. Our products are built to help practices succeed. We are constantly moving forward, improving and striving to deliver unmatched value to our customers in product, service and performance.

### QUALITY • DIVERSITY • LEAD TIME

Our wide range of products are continually being updated to adapt to emerging needs to better serve the chiropractic community.



**See page 20**  
for more information  
on Creating Your  
Pivotal Practice



# FEATURED PRODUCTS

**As your practice grows and evolves, so do our products.** We strive to stand out and foster innovative thinking to solve problems and push the creative barriers of product selection, performance, and price. We want you to succeed and that is why we design and build products that give your practice value. By continually improving our product lines, we create more opportunities for our customers and for ourselves.



**Mobile Workstation**



**Visitor Chair**



**Thera-P Traction Table**



**Logo Rugs**



**Smart Step Wellness Mat**



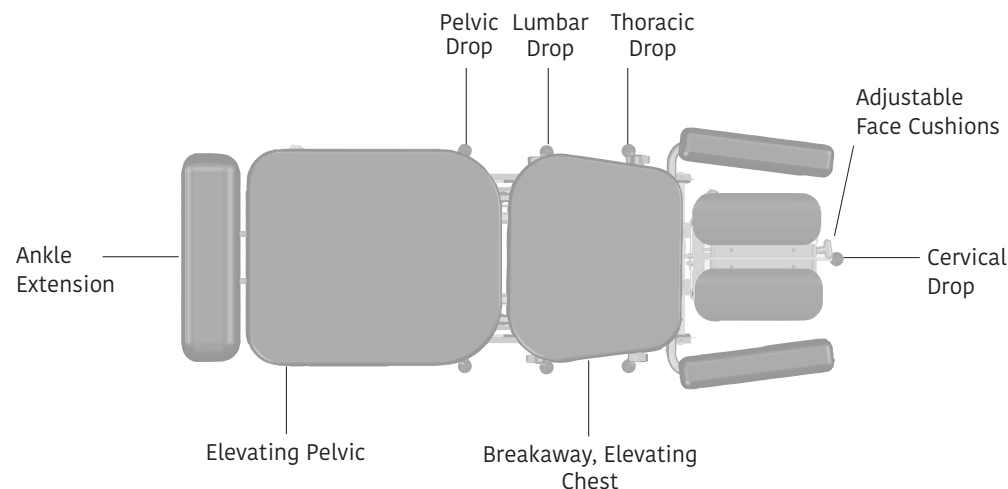
**Stools**



Visit our website for complete details.  
[www.PHSChiropractic.com](http://www.PHSChiropractic.com)

# ErgoStyle™ ES2000 GEN II

The ErgoStyle™ ES2000 Gen II takes the table you know one step further. With smooth electric elevation and easy upgrades, you can customize your table to your practice setting. Our patented ErgoStyle drop elevates across the entire cushion, rather than a single pin, allowing for improved accuracy and a smoother adjustment with less force-for less stress on you and your patient. It's also fully modular, allowing for easy modifications and upgrades in the field, both now or later as your techniques and practice grow.



ErgoStyle™ ES2000 GEN II  
ES9300 shown with options



**VERSATILE.  
SMOOTH.  
ERGONOMIC.**

**LIFTING CAPACITY**  
400 lbs.

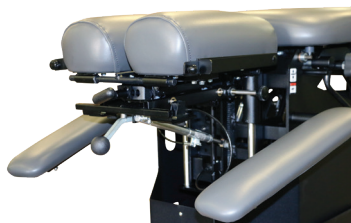
**OVERALL DIMENSIONS**  
70"L x 28"W x 20-32"H

**EXTENDED MAXIMUM LENGTH**  
76"L with ankle extension

**CUSHION WIDTH**  
22.5"W



# Pivotal Points



**Headpiece:** Tilt, Elevation, Forward Drop, Toggle Drop & Adjustable Face Cushion Options



**Auto-Cocking Drop Option** (Includes Thoracic, Lumbar & Pelvic Drops)



**Full Length Patented Accelerator III Drops**



ErgoStyle™  
ES2000 GEN II  
ES9300  
SHOWN WITH OPTIONS



Visit our website for complete table details.  
[www.PHSChiropractic.com](http://www.PHSChiropractic.com)

# ErgoStyle™

## ES2000 GEN II

ES2000 GEN II .....ES9300  
Elevating Adjusting Treatment Table

ES2000 GEN II .....ES9320  
Elevating Adjusting Treatment Table with 3  
Auto-Cocking Drops

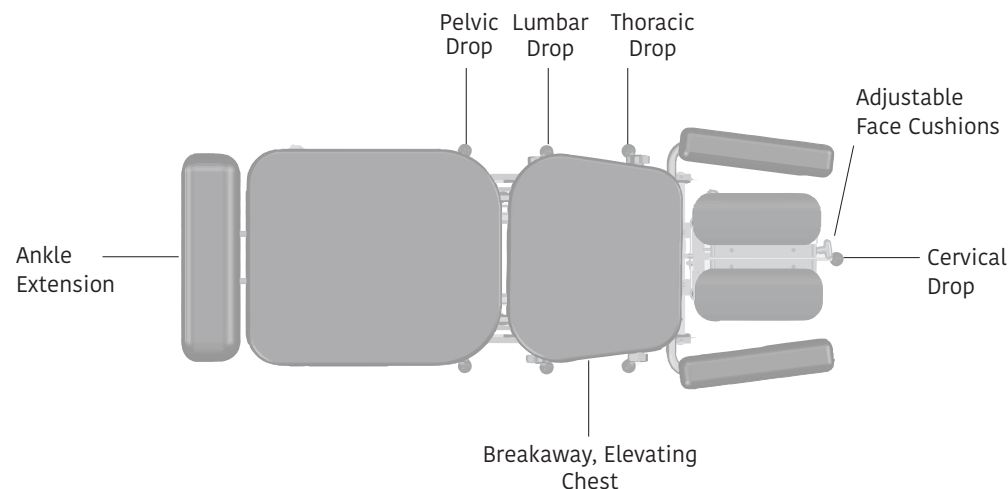
## Standard Features:

- Lifting capacity: 400 lbs.
- Overall dimensions: 70"L x 28"W x 20-32"H
- Extended maximum length: 76"L with ankle extension
- Electric elevation from 20-32"
- Single foot pedal for elevation
- Expanding covers over lifting mechanism
- Tilting headpiece with adjustable sewn face cushions
- 22.5" Wide seamless cushions with multi-density foam
- Locking 6" extending ankle rest
- Stationary chest
- Fixed pelvic section
- Paper roll holder and cutter
- Durable powder coat finish
- Dual auto-cocking foot pedal included with auto-cocking drops
- ADA compliant

**NOTE: International (230V) option available**

# ErgoStyle™ FX

The ErgoStyle™ FX offers full, ultra-smooth counterbalanced flexion, distraction or circumduction, effortlessly meeting the core needs of your practice. Manual flexion/distraction is built right in, with infinitely variable electric spring tension so you can move the caudal section in any direction with just the touch of a finger. For added flexibility, the table also quietly elevates from its lowest height of 20" to its full height of 32". The fully modular design allows for upgrades now or in the future, including manual drops, auto-cocking drops, auto flexion, various headpieces, and many other options.



**DESIGNED  
FOR THE  
DOCTOR.**

Smoother adjustments with  
less force - for less stress  
on you & your patients.

**LIFTING CAPACITY**  
400 lbs.

**OVERALL DIMENSIONS**  
70"L x 28"W x 20-32"H

**EXTENDED MAXIMUM LENGTH**  
78"L with ankle extension

**CUSHION WIDTH**  
22.5"W



# Pivotal Points



**Digital Interface Control**



**Headpiece:** Tilt, Elevation, Forward Drop, Toggle Drop, Adjustable Face Cushion Options



**Breakaway, Elevating Chest Option** with Single or Dual Side Control



ErgoStyle™ FX  
SHOWN WITH OPTIONS



Visit our website for complete table details.  
[www.PHSChiropractic.com](http://www.PHSChiropractic.com)

# ErgoStyle™ FX

FX .....ES5820  
Elevating Manual Flexion Distraction Table

FX .....ES5822  
Elevating Manual Flexion Distraction Table  
with 3 Auto-Cocking Drops

## Standard Features:

- Lifting capacity: 400 lbs.
- Overall dimensions: 70"L x 28"W x 20-32"H
- Extended maximum length: 78"L with ankle extension
- Electric elevation from 20-32"
- Single foot pedal for elevation
- Expanding covers over lifting mechanism
- Tilting headpiece with adjustable sewn face cushions
- 22.5" Wide seamless cushions with multi-density foam
- Manual flexion/distraction  
(Flexion: 15°; Extension: 12°; Side Bending: 30° total)
- Single tension foot pedal (manual flexion only)
- Locking 8" extending ankle rest with ankle cuffs
- Stationary chest
- Paper roll holder and cutter
- Durable powder coat finish
- Single auto-cocking foot pedal included with auto-cocking drops
- ADA compliant

**NOTE: International (230V) option available**

# ErgoStyle™

## ELEVATING HYLO

Elevating HYLO Table.....EH9400

Elevating HYLO Table.....EH9421  
Autococking 120V

### Standard Features:

- Lifting capacity: 400 lbs.
- Overall dimensions: 70"L x 28"W x 20-30"H
- Extended maximum length: 76"L with ankle extension
- Electric elevation from 20-30"
- 0-63° tilting
- Single foot pedal for elevation & HYLO
- Tilting headpiece with adjustable sewn face cushions
- 22.5" Wide seamless cushions with multi-density foam
- Locking 6" extending ankle rest
- Stationary chest
- Fixed pelvic section
- Foldaway foot plate
- Paper roll holder and cutter
- Durable powder coat finish
- Dual auto-cocking foot pedal included with auto-cocking drops
- ADA compliant



**ErgoStyle™ Elevating HYLO** is feature-rich with smooth elevation and up to 63° tilting capabilities that reduce stress on you and your patients. The ErgoStyle Elevating HYLO Table also features a tuck away foot plate allowing better access to the end of the table. Because it's fully modular, it accommodates easy modifications and upgrades as your practice and techniques grow. Choose from manual drops, various adjustable headpieces, breakaway chest, and many other options to customize your table to your practice needs.



ErgoStyle™ Elevating HYLO  
EH9400  
SHOWN WITH OPTIONS

**LIFTING CAPACITY**  
400 lbs.

**OVERALL DIMENSIONS**  
70"L x 28"W x 20-30"H

**EXTENDED MAXIMUM LENGTH**  
76"L with ankle extension

**CUSHION WIDTH**  
22.5"W



Visit our website for complete table details.

**[www.PHSChiropractic.com](http://www.PHSChiropractic.com)**



# ErgoBasic

## SERIES

ErgoBasic.....EB9040  
(Soft Foam)

ErgoBasic.....EB9050  
(Firm Foam)



**The ErgoBasic Series** offers a critical mix of adjusting features that is praised by many practitioners.

### Standard Features:

- Load capacity: 350 lbs.
- Overall dimensions:  
27"W x 65"L x 18-24"H
- Tilt headpiece
- Accelerator™ III pelvic drop
- Unitized steel frame
- 20.5" Wide seamless cushions
- Paper roll holder and cutter
- Shipped fully assembled
- ADA Compliant

# ErgoBasic

## WITH MANUAL PUMP ELEVATION

ErgoBasic.....EB9060  
(18-24"H)

ErgoBasic.....EB9061  
(22-28"H)



### The ErgoBasic helps you to work smarter...

A streamlined design at an affordable price, the ErgoBasic with Manual Pump Elevation offers style and innovation with a variety of adjustable features to help practitioners deliver the best care.



### Standard Features:

- Load capacity: 400 lbs.
- Overall dimensions:  
27.25"W x 69.5"L x 18-24" or 22-28"H
- Manual hydraulic pump elevation
- Tilting headpiece with adjustable sewn face cushions
- Firm Foam
- Paper roll holder and cutter
- Durable powder coat finish
- Accelerator™ III Pelvic Drop
- ADA Compliant

# ErgoBench

## SERIES

Fixed Top...EB9020-U  
(Soft Foam)

Fixed Top...EB9030-U  
(Firm Foam)

Tilt Head...EB9000-U  
(Soft Foam)

Tilt Head...EB9010-U  
(Firm Foam)



**The ErgoBench Series** brings uncompromised stability and style to any office at an affordable price. It features a smooth, flat surface, unitized steel frame with a bottleneck shape, seamless cushions, multi-fit arm rests, and a paper roll holder and cutter.

### Standard Features:

- Load capacity: 350 lbs.
- Overall dimensions:  
24"W x 73"L x 18-24"H
- Unitized steel frame
- 24" Seamless cushions
- Multi-fit arm rests
- Paper roll holder and cutter
- Bottleneck shape
- ADA Compliant

# TradeMark TABLE

TradeMark Adjusting Table .....E9012

## Standard Features:

- Lifting capacity: 350 lbs.
- Overall dimensions: 65"L x 28"W x 19"H
- Extended maximum length: 73"L with ankle extension
- Stationary table height is 19"
- Adjustable face cushion and tilting headpiece
- 8" Ankle extension with elevation
- Breakaway and elevating abdominal cushion
- 22" Wide comfort cushions
- Long, ergonomic arm pads
- Steel base
- Paper roll holder and cutter
- ADA Compliant

**NOTE: International (230V) option available**

**The TradeMark Adjusting Table** is engineered for excellence and designed as an affordable choice for a growing practice or as a starter table. Standard features include adjustable face cushions, 8" ankle extension with elevation, and breakaway abdominal with elevation. Quality options include all three drops (thoracic and lumbar in a single chest cushion, as well as pelvic), elevation, and a variety of headpieces.



**Headpiece:** Tilt with Adjustable Face Cushions



TradeMark  
E9012  
SHOWN WITH OPTIONS

**An affordable choice  
for your practice.**

**LIFTING CAPACITY**  
350 lbs.

**OVERALL DIMENSIONS**  
65"L x 28"W x 19"H

**EXTENDED MAXIMUM LENGTH**  
73"L with ankle extension

**CUSHION WIDTH**  
22"W



Visit our website for complete table details.  
**[www.PHSChiropractic.com](http://www.PHSChiropractic.com)**



**The TradeFlex Series** features electric tension controls and optional cervical, thoracic, lumbar and pelvic drops, and the ability to perform figure-8 range of motion. The pelvic drop can be used in any position. We now offer thoracic and lumbar drops in a single chest cushion. Lock the P/A and lateral flexion in any position.

“This table offers so much versatility...

...allowing for optimum correction of spinal/ extremity misalignments or disc and compression issues yet still functioning as an exam, adjusting and therapy table.”

**Dr. Galen Stolp** Integrated Chiropractic and Rehab

ELEVATION OPTION  
AVAILABLE  
21-29" H



TradeFlex  
E9017  
SHOWN WITH OPTIONS

**LIFTING CAPACITY**  
350 lbs.

**OVERALL DIMENSIONS**  
73"L x 28"W x 20"H

**EXTENDED MAXIMUM LENGTH**  
83"L with ankle extension

**CUSHION WIDTH**  
22"W



Visit our website for complete table details.

**[www.PHSChiropractic.com](http://www.PHSChiropractic.com)**

# TradeFlex TABLE

TradeFlex Manual Flexion Table.....E9017

## Standard Features:

- Lifting capacity: 350 lbs.
- Overall dimensions: 73"L x 28"W x 20"H
- Extended maximum length: 83"L with ankle extension
- Stationary table height is 20"
- P/A Flexion 15°
- Rear lateral flexion 15° (30° total)
- Electric spring tension
- 10" Ankle extension
- Breakaway abdominal
- 22" Wide comfort cushions
- Tilting headpiece with adjustable face cushions
- Steel base
- Short T bar and SST strap
- Paper roll holder and cutter

**NOTE: International (230V) option available**

# TradeBasic

## BENCH



### Standard Features:

- Load capacity: 350 lbs.
- Overall dimensions: 27"W x 74"L x 18-24"H
- Tilt headpiece with adjustable face cushions
- Firm Foam
- Pelvic drop
- Unitized steel frame
- 22" Wide Comfort cushions
- Paper roll holder and cutter
- Ships fully assembled

The **TradeBasic Bench** is engineered for excellence and designed as an affordable choice for a growing practice or a starter table. Standard features include a tilt headpiece with adjustable face cushions and a pelvic drop. Quality options include a lumbar and thoracic drop and a tilt headpiece with cervical drop.

# Max Metal

## DROP TABLE

Max Metal Drop Table .....ME2002



### Standard Features:

- Load capacity: 400 lbs.
- Overall dimensions: 21.5"W x 71.5"L
- Height ranges: 18-19", 20-21", 22-23" or 24-26"
- Stationary face cushion
- Extension/Flexion headpiece
- Paper roll holder and cutter
- 8" Ankle extension
- 22" Wide comfort cushions
- Black base

The **Max Metal Drop Table** with its classic design offers an affordable way for you to start your practice. Fully upgradeable, choose cervical, thoracic or lumbo-pelvic drops, headpieces and other options.



Thoracic Drop



# Basic Pro

## PORTABLE CHIROPRACTIC TABLE



### Standard Features:

- Load capacity: 400 lbs.
- Overall dimensions: 21.5"W x 70"L
- Folded Table: 21.5"W x 37"L x 8"H
- Height range: 18.5-22.4"
- Table weight: 46 lbs.
- Thoracic & pelvic drops
- Narrow shoulder design
- 5 Angle adjustable headpiece
- Adjustable ankle extension
- Adjustable height, folding legs
- 2" Multi-layer foam cushion with black upholstery
- Hand rests
- Paper holder
- Black carry case

**The Basic Pro Portable Chiropractic Table** is beautifully portable yet tough enough to withstand the requirements of the most demanding use.

# EB Portable

## CHIROPRACTIC TABLE

EB Portable Table .....PCT1000



### Standard Features:

- Load capacity: 350 lbs
- Table weight: 35 lbs.
- Overall dimensions: 68"L x 22"W x 19"H
- Folded dimensions: 34"L x 9"W x 21.75"H
- Foldable with handle for easy transport
- Fixed arm rests
- Fixed height
- 2" High density foam
- Bottleneck shape
- ADA Compliant

**The EB Portable Chiropractic Table** is the perfect design for portability and function in a chiropractic table. This table is strong, stable, and easy to transport and set up.

**This table provides a viable alternative to bulky stationary designs.**

# ME2002

## ELEVATING TABLE - THE BOLT

ME2002 Elevating Table

The Bolt.....ME2002



# HY2002 IAT

## HYLO ELEVATING TABLE



### Standard Features:

- Lifting Capacity: 400 lbs.
- Overall dimensions: 80"L x 28"W x 24-36"H
- Electric elevation range: 24-36"
- 3" High density foam cushion with face opening
- White powder coat steel base
- 2 Sliding doors on each side of table
- Ankle rest with 3.5" elevation
- 2 Foot pedals (1 on each end)
- 1 Mounted hand control
- ADA Compliant

The **ME2002 Elevating Table - The Bolt** has been designed and built with the highest standards of quality, integrity and innovation.



*ME2002 with Pelvic Drop*

### Standard Features:

- Lifting Capacity: 350 lbs.
- Overall dimensions: 80"L x 28"W x 20-34"H
- Height range: 20-34"
- Steel base with white powder coat
- 0-63° Tilting
- Ankle rest with 3.5" elevation
- Electric foldaway foot plate
- Single hand control for elevation and tilt
- 26" Handles below cushions
- 3" High density foam cushions
- Low profile locking casters
- ADA Compliant



*HY2002*

# ErgoWave

## ROLLER MASSAGE TABLE

ErgoWave Roller Massage.....EW9080



### Standard Features:

- Load Capacity: 350 lbs.
- Overall dimensions: 78"L x 25"W x 24"H
- Quick height adjustments: Gas spring makes roller height adjustments quick and easy
- Ultra quiet operation: high-quality motor for nearly silent operation without disturbing vibrations
- Built-in storage shelf
- Welded steel frame for stability
- 30-Minute timer
- 3" Roller height adjustment

**The ErgoWave Roller Massage Table** covers all areas of the spine isolating the lumbar, thoracic or cervical regions. Three independent rollers repeat every 13 seconds delivering a unique wave action that travels up the spine. A powerful yet nearly silent motor never disturbs your patient's relaxation and you can add a leg bolster or head pillow for added comfort.

# ATT-300

## INTERSEGMENTAL ROLLER MASSAGE TABLE



### Standard Features:

- Load capacity: 350 lbs.
- Overall dimensions: 22"W x 72"L x 25"H
- Clockwise and counter-clockwise rotation
- Travel indicator
- Automatic lowering device
- Adjustable massage pressure
- Vibration
- LED roller height indicator
- 30 Minute timer
- (1) Cervical bolster and (1) knee bolster (black)
- 4" Roller height adjustment
- Casters



**Available in wood!**  
*ATT-300-W*



# DOC Decompression TABLE

DOC Decompression .....E9011-B  
120V Targeting of Axial Rotation and Lateral Flexion

DOC Decompression Tower .....E9022  
120V Targeting of Axial Rotation and Lateral Flexion

## Standard Features:

- Lifting capacity: 350 lbs.
- Overall dimensions: 30"W x 77"L x 21"H
- Electric elevation range: 21-29"
- Lateral flexion positioning and axial rotation
- Cervical capture headpiece
- Traction belting system enhances restraint for optimal decompression
- User-defined treatment hold and relax times
- Real-time digital treatment tracking
- Speed control
- Pre-programmed lumbar and cervical decompression protocols
- Digital Command Center includes:
  - Specific vertebral targeting
  - Separate lumbar and cervical traction/decompression programming
  - Continuous readout and graphing of treatment parameters
  - Interactive color display
- Reference library - including patient setup and training materials

The **DOC Decompression Table** takes your chiropractic practice to the next level with its unique design and impressive list of standard features. The state-of-the-art digital command center controls specific vertebral targeting, including axial rotation and lateral flexion; correctly positions patients in antalgic posture; offers separate lumbar and cervical decompression programming; and delivers continuous readout and graphing of treatment protocols. The digital command center also controls table elevation and rear flexion, all at the push of a button. Patients may be treated in supine or prone positions and from various angles.



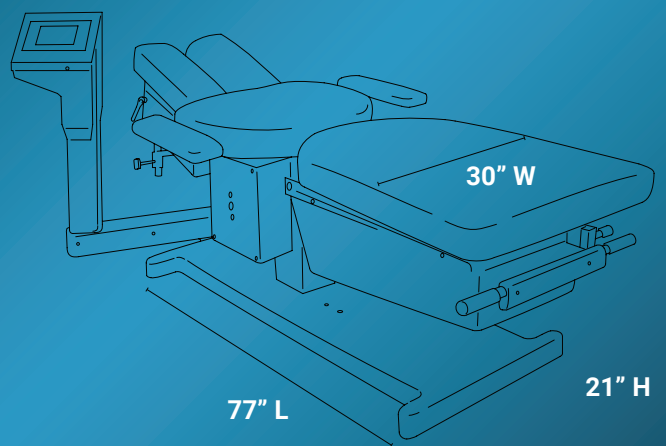
### "AWESOME TABLE AND SUPPORT ALL AROUND. HIGHLY RECOMMENDED."

After much research, talking to colleagues, and even attending a decompression seminar I decided on the DOC Decompression table because of the cost, ease, cost of maintenance, and table size. My favorite feature is that the table not only works in supine position, but also for prone treatment as well as rotation and/or lateral flexion so I can get the best clinical outcome. I'm very happy with how well it's performed for me over these past couple of months and patients are getting the fantastic results they need."

**-Harris Meyer, DC; East Bay Disc Centers**



The DOC Decompression Table offers optimal patient comfort and safety.



Trusted  
all over  
the world

- FDA Cleared
- EU Certified
- Licensed in Canada



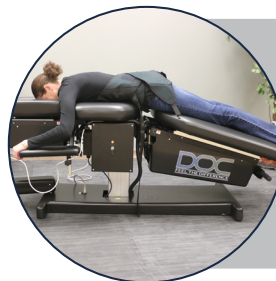
Visit our website for complete table details.  
[www.PHSChiropractic.com](http://www.PHSChiropractic.com)

# Traction, Decompression and 3D Pull



## Supine Flexion and Extension

Great for patients suffering from conditions where flexion improves symptoms. The ideal position for older or heavier patients who can't tolerate prone decompression however benefit from extension with disc herniations or disc bulging.



## Prone Flexion and Extension

The ideal patient position for patients suffering from symptoms of Spinal Stenosis. The ideal patient position for younger patients who can tolerate prone positioning for symptoms of disc herniations and disc bulges.



## Lateral Flexion

Laterally flexing away from a disc herniation can dramatically help improve disc herniation outcomes. It is also effective for symptoms of antalgic patients.



## Rotation

Effective patient positioning for antalgic patients.



## WHAT ARE THE BENEFITS OF **LASER THERAPY?**



Visit our website for complete table details.  
**[www.PHSchiropractic.com](http://www.PHSchiropractic.com)**

The laser stimulates any part of the body that has been injured and regenerates the damaged tissue. It also softens scar tissue and quiets muscle spasm by calming down the local and central nervous system (brain and spinal cord). Laser also increases joint mobility, blocks and reduces inflammation.

**For more than 40 years, laser has been used worldwide for the treatment of pain, wound healing and musculoskeletal problems.**

## WHY APOLLO?

The Desktop Apollo has two channels to allow for the use of two probes.



### **STANDARD FEATURES of the Desktop Apollo Laser:**

- 9"W x 11.25"D x 4.5"H
- 2 Channel desktop unit with choice of probe
- Heavy-duty construction for office and clinic environments
- Probe holders on both sides of the unit that can accommodate two probes and both right and left handed practitioners
- Elevated face for easy viewing and control
- Two timers allow you to treat 2 patients at the same time

The Portable Apollo can be battery operated or plugged into a standard wall socket.



Only the 3000mW and  
500mW Cluster Point  
Probes work with Portable

### **STANDARD FEATURES of the Portable Apollo Laser:**

- 5"W x 9"D x 2.5"H
- Portable control unit with choice of probe
- Heavy-duty construction for office and clinic environments
- Weighing only 2.3 pounds, the Apollo laser is the lightest, most powerful portable laser you can buy
- Custom carrying case allows for easy travel to and from office and out in the field
- User replaceable battery

## WHAT ARE THE DIFFERENT TYPES OF **CLUSTER POINT PROBES?**



## LEARN MORE ABOUT THE **PRODUCTS AND SERVICES OFFERED.**





# CLINICAL ACCESSORIES



## SMART STEP WELLNESS MATS

Our line of high-performance Smart Step Wellness Mats deliver the comfortable support you need to help reduce stress, strain and fatigue while you work, play or exercise. Each mat features extra-durable construction, non-slip tops and bottoms, and an easy-to-clean, antimicrobial surface.



FMSTTOOLS

## FMST TOOLS

Fluid Motion Soft Tissue Tools are the soft tissue mobilization tools that can take myofascial manipulation and mobilization to the next level in your practice. The design of the two tools available enables you, the practitioner, to work over all surfaces of the body quickly and easily. The tools help reduce scar tissue problems from old injuries/surgeries and achieve greater results with pain control, joint and muscle flexibility.



## OMNI CERVICAL RELIEF PILLOW

This pillow uses an ergonomically contoured shape to comfortably "cradle" the head and neck, allowing total relaxation of neck, shoulder and back muscles.

CEBL-1001

Omni Cervical Relief Pillow

## ROLLING STOOLS

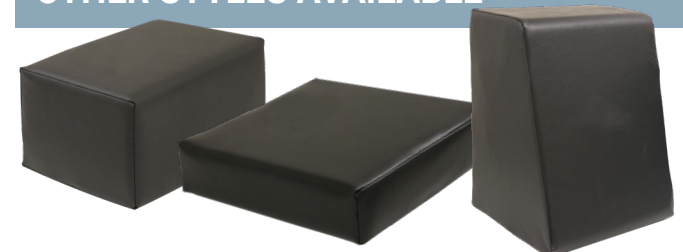
Our rolling stools combine comfort with control thanks to a 3" deluxe seat cushion, a five-star base with heavy-duty casters and pneumatic controls that adjust seat height from 18-23".



VISIT OUR WEBSITE  
FOR BOLSTERS &  
OTHER ACCESSORIES



OTHER STYLES AVAILABLE



# WHAT IS A PIVOTAL PRACTICE?



A Pivotal Practice incorporates a multi-disciplinary approach to related areas of health care such as chiropractic, massage and physical therapy using a variety of PHS products and equipment. A diverse course of treatment options opens your practice to greater opportunities and allows you to successfully treat a wider selection of conditions and patients adding value to your practice.

The crossover of products used in different healthcare markets is consistent with current healthcare trends (ex. A chiropractic table used on the sidelines of a football game) and we lead the charge. We develop our products to grow with evolving health care markets, and we take pride in providing practitioners with the tools they need to find solutions for the customers they serve.



## Workspace Reinvented.

How you work is just as important as the work you do. REV.247 provides creative products and options to help reinvent your workspace by focusing on how, where, and when you work to optimize your unique work habits. It's all about getting things done.



### REVOC05

Mid Back Office Chair with Chrome Base



### REV100

Height-Adjustable Desk

## Providing innovative furniture and equipment to the markets we serve.

Pivotal Health Solutions offers a wide selection of innovative products to enhance your overall practice. Our products are designed to help your practice succeed from every aspect of patient comfort, ease of use, durability, practitioner convenience, versatility and successful patient outcomes. Other brands include:



## More Than Print

Advertising tells the story of your business. We can help you get noticed in all the right spaces. From decals to banners, signs and more, Pivotal Printing can bring your design to life. Pivotal Printing is the smart choice for quality custom signs and friendly customer service at the right price. We believe in providing high-quality, affordable options to meet a variety of print needs that can fit most budgets.

### TRI-STAND BANNERS



### ENGRAVED DRINKWARE



### SMALL & LARGE DECALS





## We have the EDGE.

At The Athletic Edge, we pride ourselves in providing the best quality athletic training room equipment and lockers to high schools, colleges, and professional sports teams. We collaborate with schools and organizations to design cutting-edge products to meet your equipment needs and bring your facility's vision to life.

**CAB-010**  
**TREATMENT CABINET**  
*CAB-010 with Lift Back and Split Leg*



**EDGE SPORT**  
**WOOD TREATMENT TABLE**  
*FESS-2772*

**STOR-EDGE**  
**MODALITY CART**  
*SMC-002*



## Innovative Care Solutions

Outfit your therapy and rehab facility with our ergonomic, durable, state-of-the-art therapy tables. Our **Electric Epidural Positioning Device** (EPD) positions patients correctly and comfortably by encouraging cervical, thoracic and lumbar flexion while maintaining a solid and stable position.

**Electric Epidural Positioning Device**  
*EPD Package 2*



**Portable Aluminum Treatment Table**  
*I9390AE*

**3 Section Thera-P Electric Treatment Table**  
*PT1103*



## A touch above the rest.

Custom Craftworks tables are designed to add positive value to each practice as a whole by benefitting both the therapist and the client. With advanced features and numerous options, our tables are built to make a difference.

*Solutions Series*  
**Heritage Portable Table**  
*I9301*



*Classic Series*  
**Athena Portable Table**  
*AT-2807 with PG & BR*



*Classic Series*  
**Hands Free Electric Table**  
*TThera-P*



# Be the Difference.

[pivotalhealthsolutions.com](http://pivotalhealthsolutions.com)



*Add your company branding and custom powder coat base colors on the Thera-P or Hands Free Tables!*



## >> EDUCATION

Our Pivotal Professionals are here to help support and grow your practice.

A wide variety of eBooks, infographics, webinars & informational blogs can be found on our website. Learn more about the products and services offered and more at [www.phschiropractic.com/learn](http://www.phschiropractic.com/learn).



### Dr. Brian Self - DOC Decompression

Brian currently owns three highly successful spinal decompression clinics in Arizona, West Virginia and Saudi Arabia, specializing in spinal decompression and cold laser techniques.



### Dr. Curtis Turchin - Apollo Lasers

Curtis Turchin, M.A., D.C. is considered one of the experts in the fields of gentle adjusting, soft tissue work, light and laser therapy. He has been using LEDs and lasers for approximately 34 years. Dr. Turchin has taught therapists and doctors in the U.S., Europe, Japan, Brazil, Canada, and Guatemala.



### Dr. Nathan Unruh - Business Trainer

Dr. Nathan Unruh is the Chief Experience Officer at SIDECAR, home of the world's leading chiropractic business training system: Overdrive. His methods of creating chiropractic affluence have helped hundreds of doctors build thriving practices and balanced lives that allow them to live out their chiropractic dream. He is also the Director of Chiropractic at Envine.



### Dr. Jerad Blutorn - FMST Tools

Jerad is a chiropractic physician and acupuncturist with an extensive background in soft-tissue therapy, functional movement and stability. He developed FMST Tools to assist him in improving his outcomes. Jerad has successfully implemented FMST Tools into many different types of practices, including physical therapy, chiropractic, massage therapy, occupational therapy and athletic training.



eBooks



Infographics



Blogs

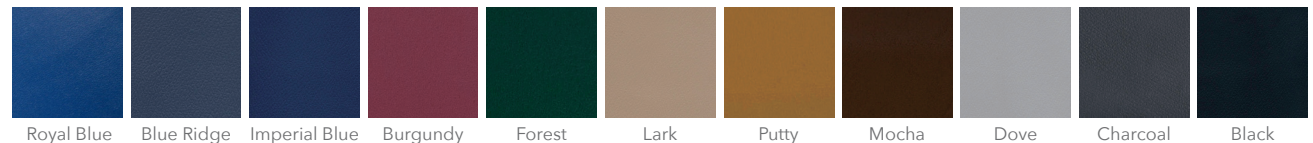
## >> WARRANTY

Your Pivotal Health Solutions product is warranted to be free from all defects in material and workmanship for a period of time. The warranty is granted only to the original purchaser.



## >> UPHOLSTERY

Standard Chiropractic Upholstery Color Choices:



# What people >>

## ARE SAYING...

### Dr. Amy McKee

McKee Chiropractic & Wellness

"I absolutely love my **ErgoStyle HYLO** table. It is perfect for all my pregnant patients because of the break aways and it allows for more room with the pregnancy pillows. It has become the preferred adjusting table of all my patients. I love how quiet it is, the smoothness of the drops and the elevation feature that saves my back when adjusting the cervical spine, doing cranial work and round ligament release. I can't wait to get a second one."



### Drs. Brad & Christina Woodle

Advanced Sports and Family  
Chiropractic & Acupuncture

"We have been very impressed with the quality of the **ES2000**, and most importantly in 2022, the speed at which they are able to get them custom made for our 7 offices!"



### Dr. Chad Bryant

Bryant Neck and Back Pain Center

"The **FX** auto flexion table is a huge upgrade. It has a manual feature that allows the doctor to have great control over how fast and far the table moves. It also has an auto flexion distraction feature that allows the doctor more freedom to manipulate the patient. With several drop pieces this is the perfect table. I would highly recommend this to everyone looking to upgrade their practice."



### Brooke Maher

RegenMedix LLC

"I would highly recommend the **DOC Decompression Table**. I was amazed at the immediate relief I felt when getting on a DOC Decompression Table. This is an innovative solution to treat back/neck pain that I have never experienced before. The main benefit was the release of pressure I felt throughout the process. I would highly recommend the DOC Decompression Table to any clinician looking to add a cash service to help patients with herniated, bulging or degenerative discs!"



### Dr. Mark Koldenhoven

Kooistra Chiropractic Clinic

"Our clinic just bought a second **Apollo Portable Laser** due to the patient demand for it. I purchased the first one about 10 years ago and it has been by far the best clinic purchase from a business and patient standpoint. First, I would not hesitate to purchase it due to the immediate ROI and its durability. Most importantly, as a practitioner, I have the confidence to recommend it to patients for their conditions because it works. Besides helping with the typical musculoskeletal conditions, we have patients that have a history of surgeries, sensitivities or extreme pain and the laser is a key component to help these patients. It has also been a phenomenal source of referrals. We have received countless referrals from satisfied patients looking for the same relief they got and cutting edge technology. Purchase a laser for your patients!"







# PHSChiropractic

by Pivotal Health Solutions

phschiropractic.com  
800.743.7738

